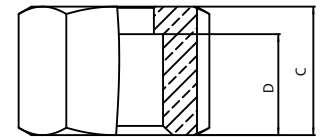


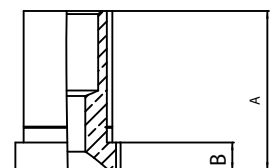
### dimensions and technical description

Type	Connections			PS bar	Dimensions [mm]					Weight [g]	Pieces per box
	SAE Flare	ODS			A	B	C	D	Ch		
ø[in.]		ø[mm]									
G2	1/4"	1/4"	-	45	-	-	16	12,5	17	25	100
R2	1/4"	1/4"	-		21	3,5	-	-	-	5	100
RM6	1/4"	-	6		21	3,5	-	-	-	5	100
G3	3/8"	3/8"	-		-	-	18,5	14,7	22	40	100
R3	3/8"	3/8"	-		23,5	4	-	-	-	10	100
RM10	3/8"	-	10		23,5	4	-	-	-	10	100
G4	1/2"	1/2"	-		-	-	21	17	27	70	50
R4	1/2"	1/2"	-		23,5	4	-	-	-	15	50
RM12	1/2"	-	12		23,5	4	-	-	-	15	50
G5	5/8"	5/8"	-		-	-	22,5	18	30	85	50
R5	5/8"	5/8"	-		27,5	5	-	-	-	20	50
G6	3/4"	3/4"	-		-	-	25	20	36	130	50
R6	3/4"	3/4"	-		30	5	-	-	-	40	50
RM18	3/4"	-	18		30	5	-	-	-	35	50

«G.»



«R.»



«copper gasket»

# FLANGE UNIONS

### dimensions and technical description

Type	Connections				Dimensions			Screw torque [Nm]	PS [bar]	Weight [g]	Pieces per box
	ODS (A)		ODS (B)		E	L	SCREW				
	[in.] Ø	[mm.] Ø	[in.] Ø	[mm.] Ø							
FU7	7/8"	-	7/8"	-	22	60,5	M8	24Nm	45	565	45
FU9	1.1/8"	-	1.1/8"	-	22	60,5	M8	24Nm		430	45
FU11	1.3/8"	35	1.3/8"	35	25	66,5	M10	50Nm		915	23
FU13	1.5/8"	-	1.5/8"	-	25	80,5	M10	50Nm		1240	15
FUM42	-	42	-	42	25	80,5	M10	50Nm		1235	15
FU17	2.1/8"	54	2.1/8"	54	30	80,5	M12	80Nm		1960	15

